

bjoorn

INSTALLATION INSTRUCTION
BJOORN PARQUET HERRINGBONE

Locking system 5G

Index

Introduction – page 3

Product information

If craftsmen/installer is required

Important

Tools

Before installation – page 4

Policy surface appearance

Room designs, floor size etc.

Expansion gap to vertical construction parts

Preparations

Subfloor, the load-bearing construction

Underlay material

Floor heating

Room climate

Ventilation

During installation – page 7

A- and B-strips

Starting triangles

Making starting triangles

Installation method

Dismantling of an installed strip

When angling is not possible

Installation around heating pipes

After installation – page 15

Surface treatment

Skirting

Maintenance

Quality policy

Other

Introduction

Product information

- A European parquet strip with a core of high-end plywood approx. 2.7 mm wear layer, pre sanded to 120 grains. Strips A & B.
- Strip size L = 340 mm, W = 68 mm, T = 12 mm.
- 1 box contains 24 strips = 0,554 m².
- Sortings: Select, Rustic and Antique.
- Surface finish: Untreated, pre oiled or lacquered. Untreated strips require ordinary surface treatment. Pre oiled strips require a supplementary, second oil surface treatment after installation. Please ask Bjoorn Flooring for further information.
- The product is available in two types, A-Strip, B-Strip, which is marked on the reverse side of the strip. Both the A- and the B-strip are required for installation of the Herringbone pattern.
- Bjoorn Parquet strips can only be installed in dry areas.

If craftsmen is desired

Please contact Bjoorn Flooring to assist for floor installers and surface treatment. We cooperate with authorized Bjoorn installers and offer different kind of installation support.

Important

- When purchasing this flooring always add approx. 10-15% margin/overflow for processing and materials customization.
- Read through the entire installation instructions carefully before you begin to install the floor.
- Keep all flooring packages unopened at least 48 hours at room temperature before work starts.
- Stacking packages "airy". Then successively open the packages as the floor is laid. The room temperature must be at least 18 °C before and during the installation, the relative air humidity in the room should be 30-60%.

Tools

- Important to be careful so as not to grease, stains and dirt get stuck on the strips during the installation.
- Protective paper, without a polymer layer, successively placed over the floor surface during the installation, protecting the floor prior to surface treating.
- Use clean shoes, with a bright sole.
- Distance strips (see drawing); see table for gap distance.
- Sliding mitre saw or jig saw.
- Rubber club (white head).
- Fine pencil (0,5 mm), ruler, set square 45 & 90 degr.
- White glue (D3) for adjustment at radiator pipes.
- Bjoorn hand block.
- Ordinary pull bar, hammer.
- Bjoorn dismantling tool.



Bjoorn hand block.



Bjoorn dismantling tool.



Rubber club.



Distance strip 250 mm x 40 mm.
Ex. thickness=10 mm (i.e req. gap).

Before installation

Policy surface appearance

If any questions may be about quality, sorting, or defects, it is important to complain before you install the floor. When a floor strip is installed by yourself or a professional installer, you as a buyer is considered to have approved the product. An installed strip is an approved product.

Room designs, floor size etc.

In all areas, domestic and commercial areas for example offices, shops, expos etc., normal furnished symmetric floor areas/rooms bigger than 10 x 10 m (maximum 100 m²), between adjacent rooms, transitions to corridors you always must install expansion joints to avoid joint openings.

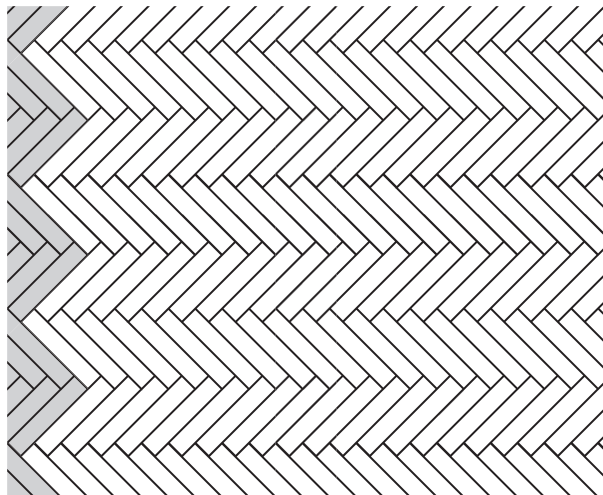
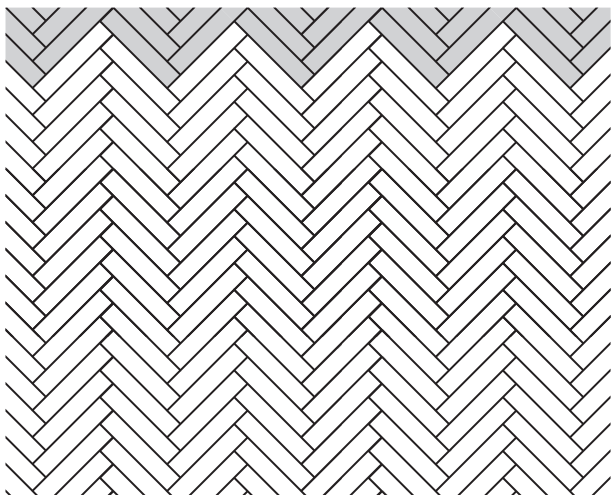
In for example kitchens all permanent pieces of furniture and such as cupboards and kitchen islands must be installed on the carrying subfloor and not on the parquet floor.

This is made by separating the floor into sections depending on installation patterns and main direction. By harmonization of heavier furnishing as for example counters, kitchen islands, bookcases, safes etc. the floor must be separated into smaller sections by expansion profiles, as heavy furnishing on a floor forms fix points (i.e. the floor area will not be allowed to move according to current room climate).

Expansion gap to vertical construction parts *Recommended gap distance – table		
Longest distance (m)	Gap (mm)	Skirting thickness (mm)
<4 m	6	12
4-7 m	10	16
>7-10 m	15	22

Preparations

- Remove the old skirting boards. The floor should be floating installed, i.e. the strips should not be glued or nailed down to the construction sub floor or installed against solid structures/objects.
- Leave an expansion gap between the floor and all fixed structural elements such as walls, thresholds, pillars or pipes in the room. *See table above gap distance*.*
- Measure the room and calculate the number of columns required, usually longitudinally or in main light direction. *See section Starting triangles below.*



Subfloor, the load-bearing construction

Bjoorn Parquet Strip can be installed on almost any type of subfloor such as wooden floors, PVC or cement concrete floors. Wall-to-wall carpets, for example needle felt carpets needs to be removed.

Ensure that the subfloor is leveled, flat (± 1 mm over 2 m), dry and clean

- Subfloor of wood up to 50% RH or about 8-10% moisture content at 20 °C.
- Subfloors of concrete and concrete slab on ground max 90% RH at 20°C.

NOTE! Age resistant PE film, 0,20 mm, is required.

RH-Moisture tests according to the borehole method (www.rbk.nu).

Elevated areas such as wood or concrete edges, tops must be sanded down or evened up.

Screw loose areas that squeaks and replace damaged parties that is loose or damaged by humidity.

Underlay material

Install an underlay material as a noise reduction/aliasing, it shall be slightly compressible and with a maximum thickness of 2 mm. Foam (density ≥ 30 kg/m³) is a recommended underlay material. Floor paper is not recommended.

All types of concrete sub floor and ceramics also require moisture protection, even if damp insulation is in the floor construction. Moisture insulation (vapor barrier) shall be at least 0.20 mm thick, age resistant PE-film (LDPE). The film/foil should be at least 20 cm overlap between the joints, taped, folded up against the walls and will be cut after floor skirtings are installed.

Floor heating

Bjoorn Parquet can only be installed on temperature regulated, water based or electricity floor heating systems, if they are included (built into) the sub floor construction. A floor sensor must always be installed to prevent the surface temperature from exceeding 27 °C.

Floor heating water based systems with the pipes positioned in profiled particle floorboards with heat distributing aluminium sheets must be covered with a loadbearing profiled (i.e. tongue/groove) sheet of particleboard or HDF, in at least 8 mm thickness.

For other floor heating systems please see the GBR-information below.

Signed installation and protocol of heating of the subfloor with floor heating system is recommended.

At all floor heating systems, a vapor barrier (a PE-foil 0,2 mm) must be placed between floor heating system and the underlay material at any type of subfloor. All underfloor heating must be turned off during installation and the floor's temperature must be between 15 °C and 25 °C.

Occurring non heated floor areas within the floor area must be separated with expansion joints (profiles).

Maximum permissible heat output is approx. 75 W/m². Maximum allowed surface temperature on the floor is 27 °C. This is true even under carpets and other overlays (i.e cup boards) that can act as

thermal insulation and increase the floor temperature over the allowed maximum surface temperature.

Temperature control after installation or if the heating system has been switched off for a longer period of time:

- The first week should have low temperature heating system 16-20 °C.
- The second week, the heating system must be adjusted as described above.

GBR-information

Further information about floor heating in buildings please go to

<https://www.golvbranschen.se/publikationer/branschregler-och-standarder>, file: Wooden floors over underfloor heating 1-2005.

Room climate

Ambient climate for wood floors should be 30-60% relative humidity (RH) at 20 °C. At low RH, fine cracks can occur in the joints between the strips, which are best remedied by an indoor air conditioner for temperature and vapor, especially during winter time.

Ventilation

If out-and-in air conditioning system is installed in the property, during winter time moisture must be added to the in-air to ensure the indoor climate/moisture requirement.

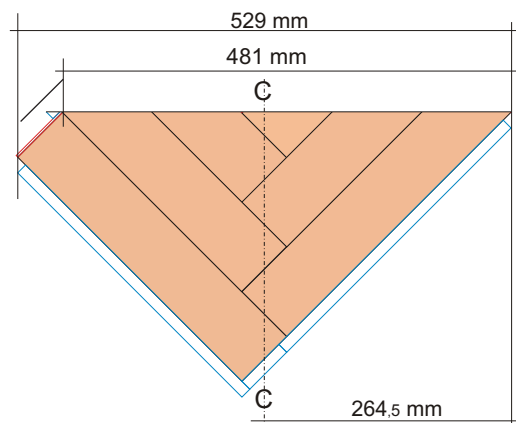
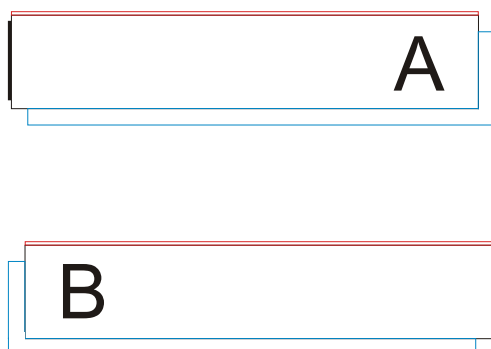
During installation

A-and B-strips

Two different types of strips, A & B, are used for installing the herringbone pattern. A- respectively B-type is marked on the back of the strip profile.

How to identify?

Place both strips with decorative surface upwards and the long side locking profile facing you. The A-strip is characterized by the short side locking profile is to the right and for the B-strip to the left. The short end tongue sides has an inserted flexible locking tongue.



Starting triangles

To quickly get started, the first starting triangles must be produced.

Calculation - number of starting triangles

Measure the length of the wall where you wish to start = L mm

Select offset from wall. See table on page 5 the wall distance*.

A starting triangle has the size, as shown in figure. Calculate the number of whole triangles $(L - 2 \times 10)/481$. *Please carefully note the dash-dotted center-line's location!*

Example

Preconditions: Room width 4000 mm. Selected gap 10 mm.

Finished flooring width: $4000 - 2 \times 10 \text{ mm} = 3980 \text{ mm}$.

Number of triangles: $3980/481 = 8,27 \text{ pcs}$ i.e. 8 pcs.

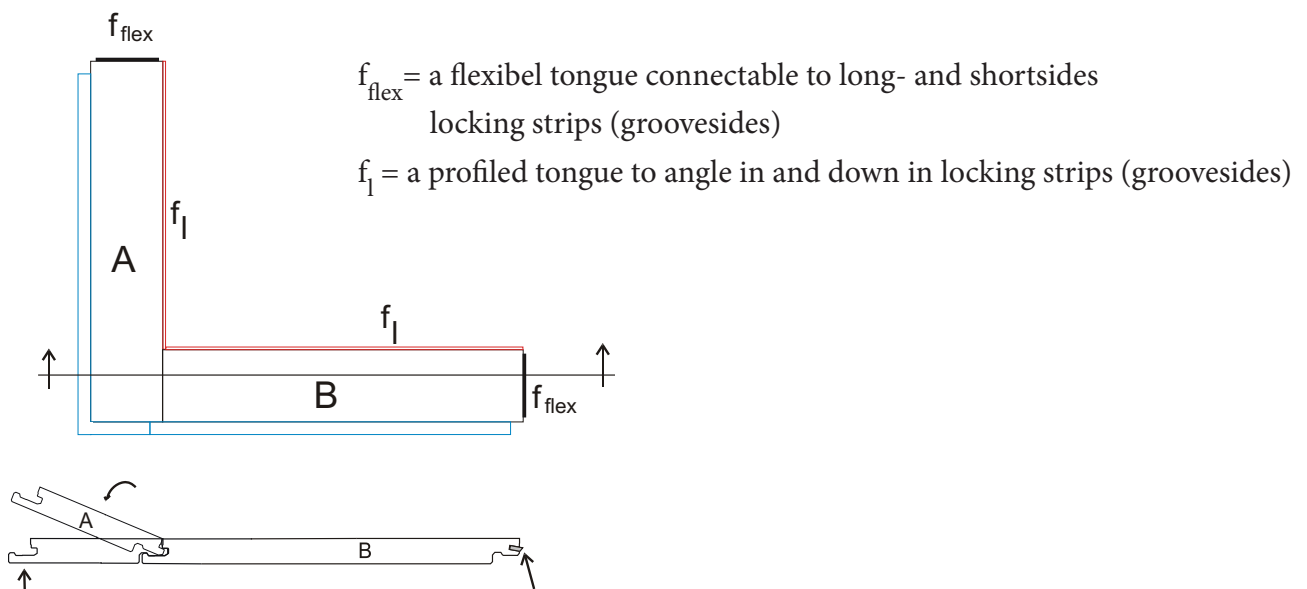
Making starting triangles

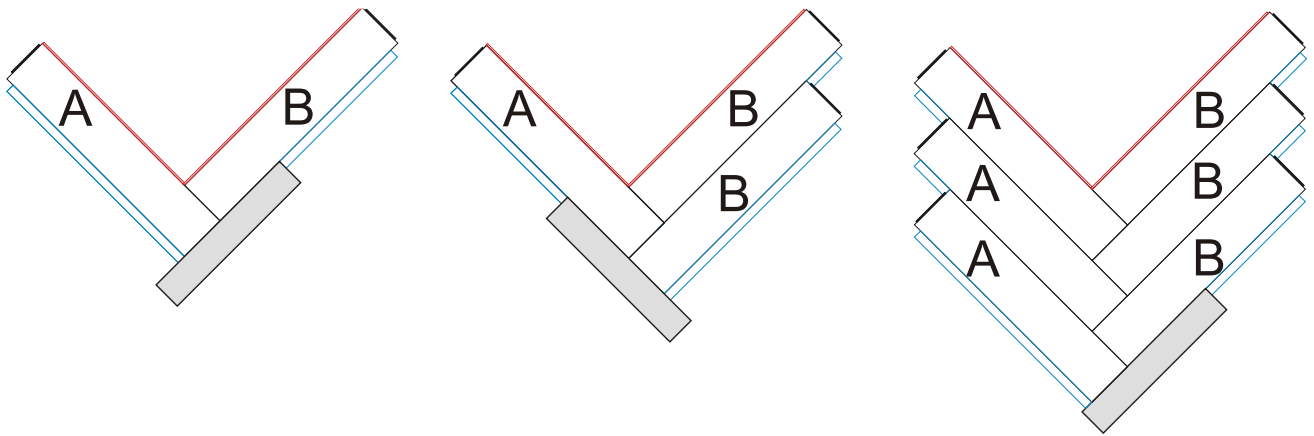
A starting triangle is made up of 6 strips (3A + 3B) according to the diagrams below. A connection of a A- and a B-strip is shown in the figure below: i.e. Press A at an angle in the groove of B and fold down, tapping it slightly with a hand tapping block on A.

Is a strip difficult to get in place, take it up and make sure the groove is free of residue or others.

Important: The construction of a starting triangle is shown in figures below, where the gray ruler (for example a strip) define the cutting line.

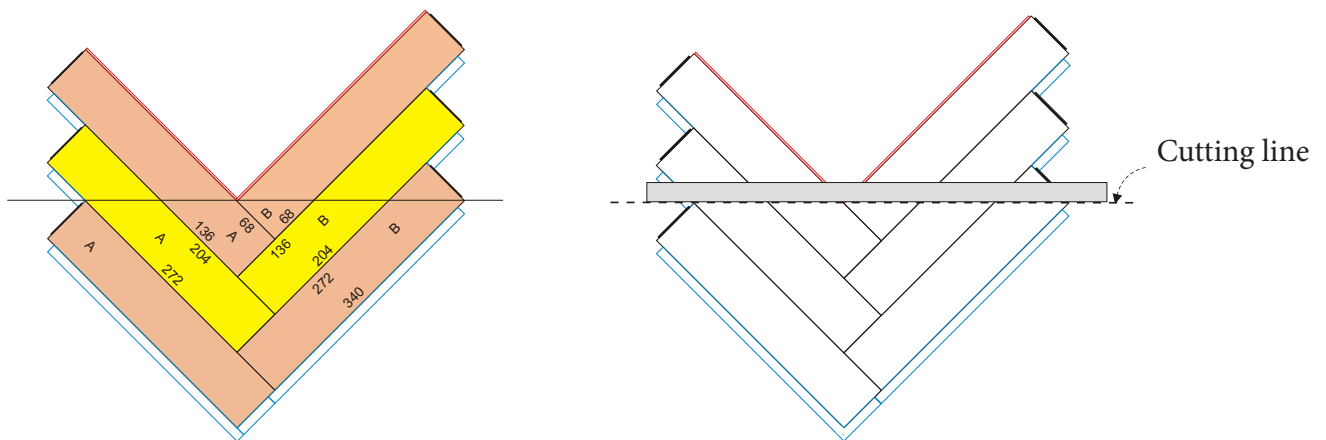
Hint: Check the joint between the strips by dragging a finger across the joint no bump (protruding edge) may be felt!





When all 6 strips are connected to a sheet, cut the triangle as shown below.

An alternative method to make a starting triangle is to cut to size each strip and then connect them. Use for example a sliding mitre saw and first mark each piece to be installed. Please note that the sawblade shall cut down towards the decorative side of the parquet strip. The drawing show the dimensions.



Installation method

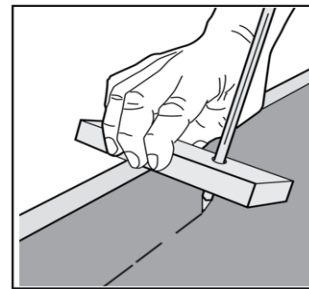
The example below shows the installation method.

Room width is approximately 2.2 m. Installed triangles: $4 \times 481 \text{ mm} + 48 \text{ mm} = 1972 \text{ mm}$.

1. Make sure the starting wall is straight and 90° to the center line (C) of the floor.
Hint: Mark the C-line on the underlay material.
2. Merge the starting triangles ("hooked" into each other) along the starting wall and center towards the center line. If the starting wall is not straight and perpendicular to the center line (C) of the room the triangles must be adjusted.
A straight edge (bar) can initially be laid out to ensure alignment.

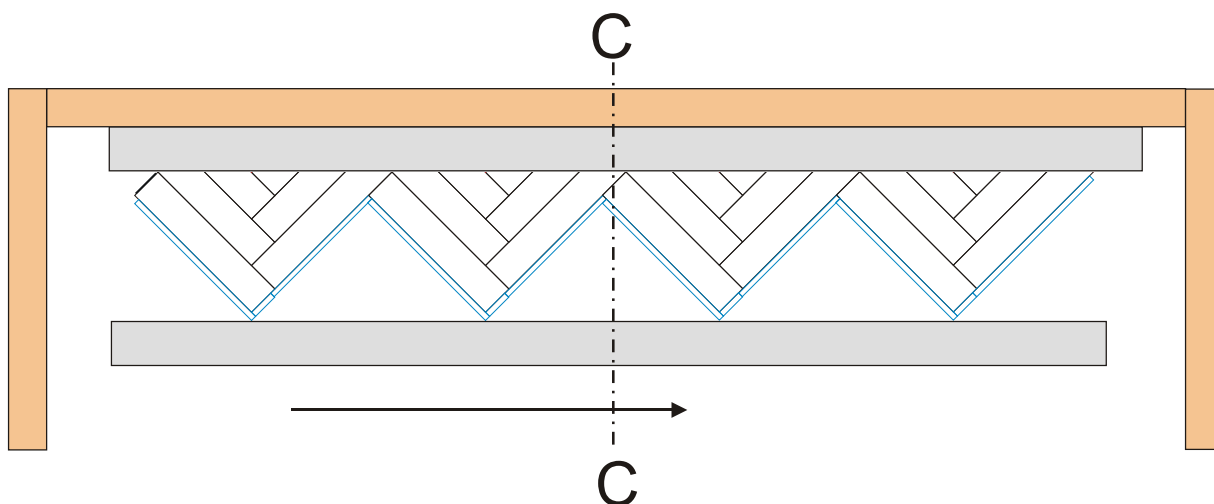
Adjustment of starting triangles

Move the connected and positioned (perpendicular) triangles row out from the wall, draw a line on the strips with e.g. a drawing tool (piece of wood with the pencil) as shown in figure.



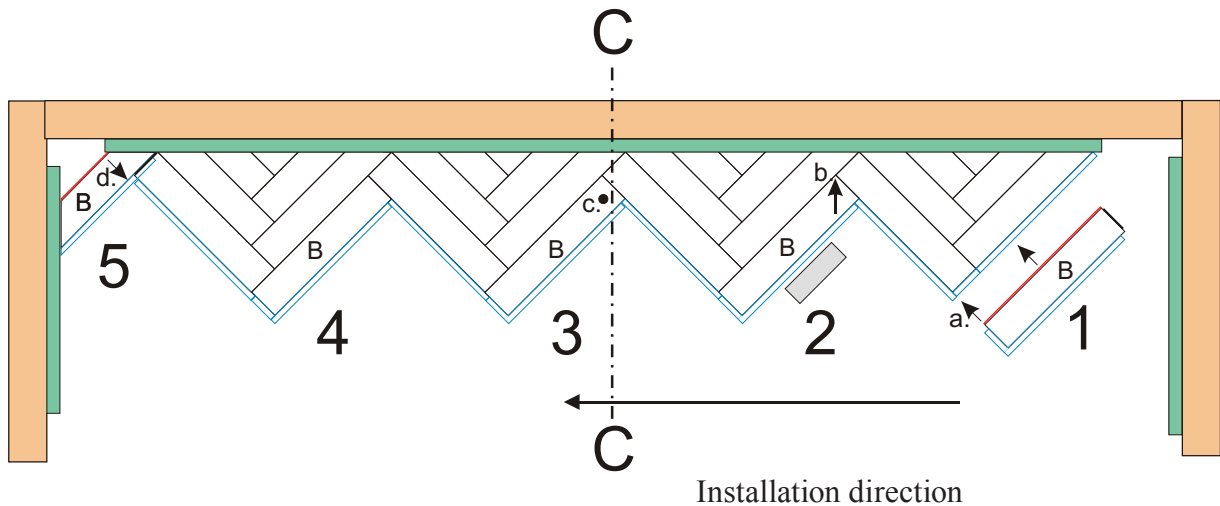
Cut with a circular saw + guide rail (protect the substrates with a thin board!), or disassemble the triangles (in the reverse installation order) and cut each.

3. After adjustment and reinstallation – check the "corner" line towards you with a straight edge.
Progressively make this control throughout the installation, i.e. every fifth row.
4. Replace the straight panel with distance strips and push the floor to the wall.



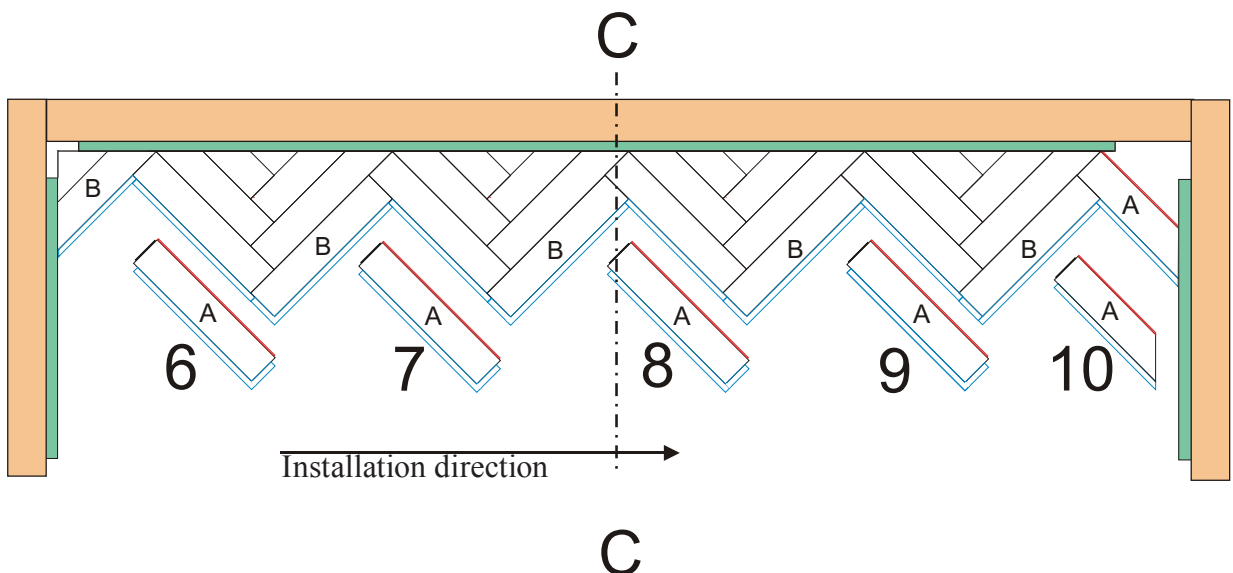
It is important that the distance strips remain throughout the installation, as the installation method entails small taps on parquet strips short sides, which can offset the installed floor – see below.

Installation method for each panel



The first B-panels row, installed to the left, connect the starting triangles. Each panel installation is schematically showed by the figures 1-5.

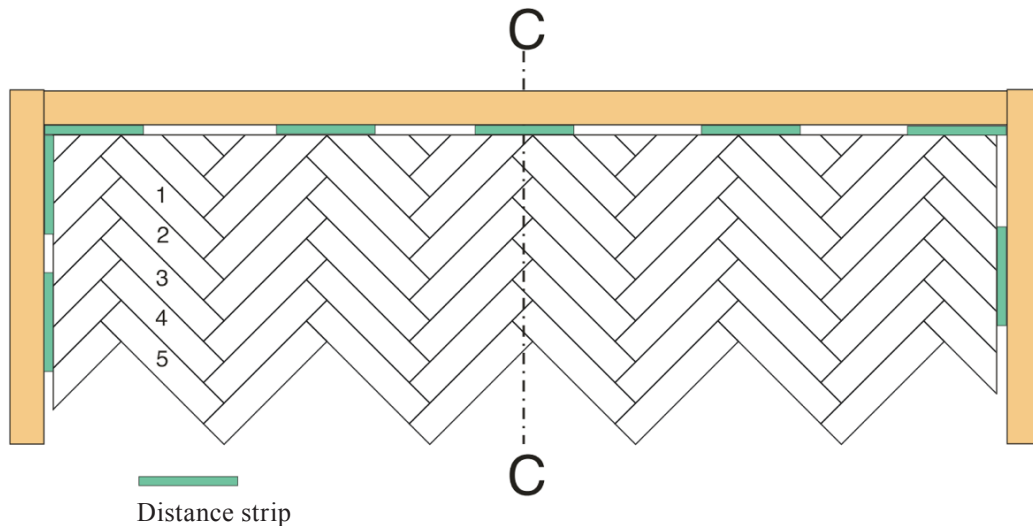
1. Place a B-strip long side tongue in about 30-40 degrees angel into the locking strip (groove) of the above installed and connected start triangle. Fold down to the floor. Note that its left short side at **a.** 100% is aligned to the start triangle.
2. Place the right short side of next strip end to end to the start triangle at **b.**
The flexible tongue then slightly is pressed in. Fold down the strip. The flexible tongue is during the folding down quite pressed in and returns to its original position when the strip is quite fold down. The strip is locked.
3. Press down (or **tap gentle** with the rubber club) at **c.** to ensure that the strip is correct installed.
4. Continue the B-row in the same way.
5. At the left corner, 5: Measure, cut and install the strips backwards, as shown at the **d.** arrow.



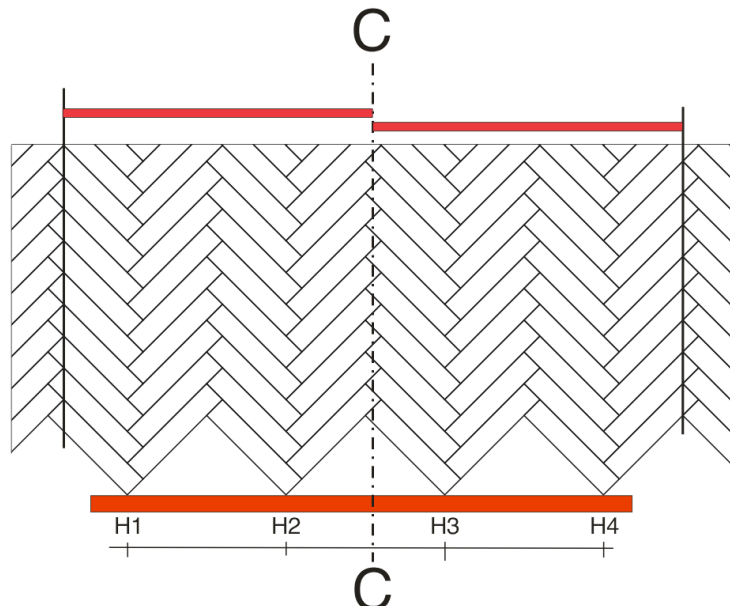
6-10. The installation procedure turns. Install the A-strips to the right (figures 6 - 10) and continue in the same way. Also install the right corner of the room.

Important:

- Always during the installation check that the joints in the triangle and the last installed row(s) are closed. If necessary a slight tap on the connected hand block with the rubber club will adjust the strips into correct position.
- After about every 5 row make sure the strips “corner” row = red line H1-H2-H3-H4 are aligned and perpendicular to the center line C, which is marked on the underlay material.
- At installation of untreated or pre oiled parquet strips it is recommended to successively cover the installed floor area with hard board or flooring paper (without polymer surface) which protect against damage, dirt and change of the moisture content of the parquet strips.



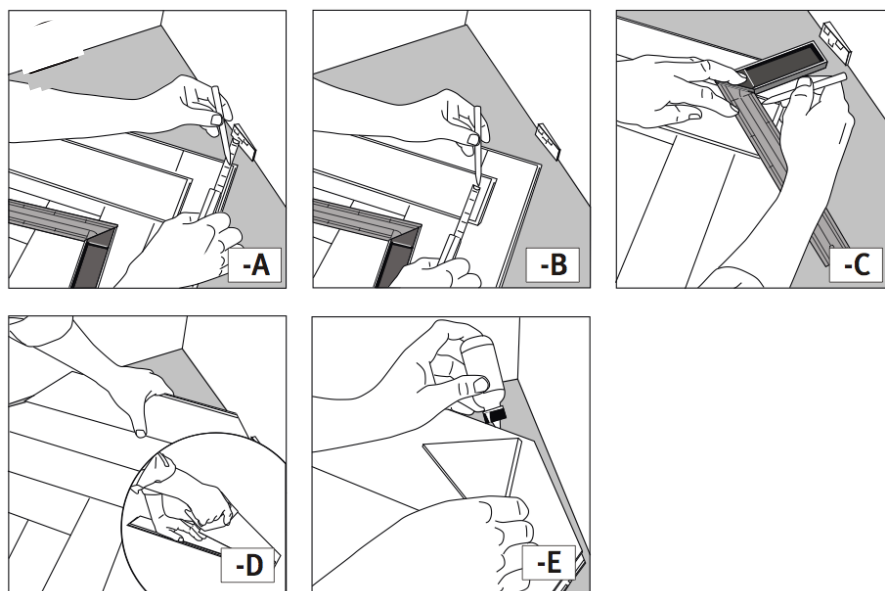
The gradually imposed distance strips remain throughout the installation, as the job and process can move the floor.



The last rows

Measure and cut the strips to size. It is recommended to use white glue at installation of the small pieces. Apply a smaller amount of glue on the locking strip (groove).

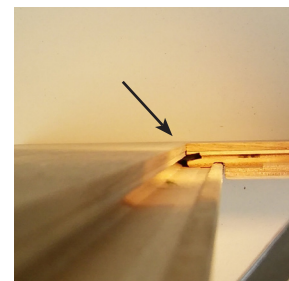
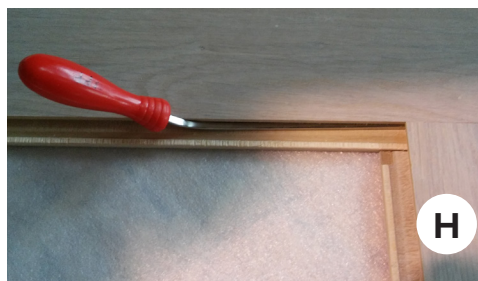
When the installation is ready remove the distance strips.



Dismantling of an installed strip

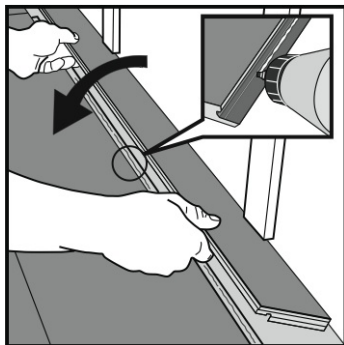
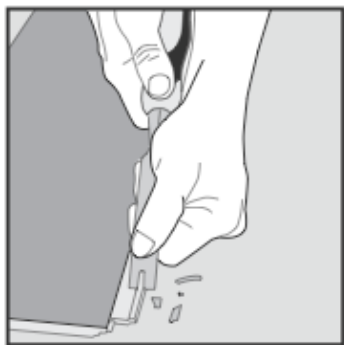
Hold the tool handle vertical. Press the steel rod to the left in the groove – as show by the arrow in the picture. The flexible tongue is pressed back into its groove and allow disassembling. As the steel rod is pressed in 68 mm (strip width): Release your hand from the tool and gently angle the right strip (H) by grabbing it in the middle and lift up.

Instruction video: <https://www.youtube.com/watch?v=-yle1s0TWtM>



When angling is not possible

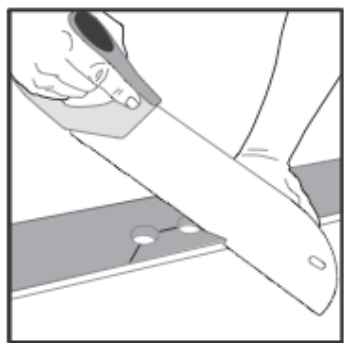
Remove “the locking element /hook” according to picture. Place white glue in the groove and install next strip horizontally. Press- place distance wedges between the glued strip and the wall.



Installation around heating pipes

Mark the center point of the tubes on the strip. Drill holes 20 mm bigger than the tube diameter (if gap distance is chosen to be 10 mm).

Cut according to the figure. Put white glue and replace the floor pieces. Cover the holes with pipe collars or fill with a joint backer rod of foam before placing the sealant (=joint sealer type SMP/MS - silicone free and paintable).



After installation

Surface treatment

Untreated and pre oiled surface finishes of the floor must be treated as soon as possible after installation according to product instructions.

A pre oiled floor must be oiled after installation and then regular be maintenance oiled.

Contact Bjoorn for recommendations of oil treatment products.

Skirtings

After finalized surface finish treatments install the skirting along the walls.

Please note that the skirting is neither allowed to be fixed in the floor nor pressed down to it.

Maintenance

Maintain the floor according to instructions for your choice of surface treatment.

Protective felt pads is recommended under furniture legs and protective carpets under caster chairs with hard wheels. Always use protective entrance carpets.

Quality policy

Joint openings

Joint openings (i.e. the distance between two strips/planks) may be maximum 0,25 mm at floor installations with flooring products made with core material of plywood or HDF. Within the warranty period maximum five (5), 0,75 mm wide joint openings are permitted per each 10 m² floor area.

Height difference

The height difference (between two close to each other installed strips/planks) may maximum be 0,20 mm. Maximum five (5) separate height differences up to 0,30 mm is permitted within a floor area of 10m². At bigger areas the number of permitted height differences is proportional to the actual floor area.

Room climate

If given limits, for indoor climate parameters as temperature and relative humidity in the air (RH) at the floor level, is exceeded or falls short of, remarks on evenness, joint openings or strip size cannot be reviewed.

The floor can be inspected when the room climate (temperature and RH) has been stable for at least 4 weeks and has returned to normal values within the limits.

This is quite natural and belongs to the hygroscopic material properties of wood and changes will quite or partly get back when the room climate conditions fulfill the requirements given on page 7, **Room climate**.

Floor heating means an additional drying of the wood flooring material which causes extra shrinking. During wintertime (heating period) the use of humidifiers are recommended.

Warranty time: The warranty period is two years from date of purchase and is limited to the first buyer of the floor. Note that a house and thus also a wood floor is acclimatized after about one year.

Other

At questions or advice for choice of surface treatment or cleaning, please contact Bjoorn Flooring: sales@bjoorn.com or call int. +46 8 678 63 25, in Sweden 020 51 50 10.

Follow Bjoorn Flooring:

Youtube: bjoorngolv

Facebook: bjoorn.se

Instagram: bjoornflooring

Houzz: bjoorn-flooring

Pinterest: bjoorn